

**GROWING &**  
**CONNECTING**  
AT COLLEGE PARK CHURCH

**FALL 2014**

**HIM WE PROCLAIM,  
WARNING EVERYONE  
& TEACHING EVERYONE  
WITH ALL WISDOM,  
THAT WE MAY  
PRESENT EVERYONE  
MATURE IN CHRIST.**

COLOSSIANS 1:28

Our mission of igniting a passion to follow Jesus cannot be lived out in a vacuum. It is only lived out when we all connect and grow together.

We encourage you to take advantage of the many opportunities to connect and grow in your faith at College Park – from large and small group gatherings for prayer and fellowship, such as Newcomer Night and Fresh Encounter to more in-depth opportunities such as College Park Institute. We are offering the Growing 101 class that will provide biblical training and give you the tools accurately handle God’s Word in life’s circumstances.

Our prayer is that each of you would find a place to connect and experience greater depth and intimacy with Jesus – building up one another in maturity in Christ.

# TABLE OF CONTENTS

---

<b>GENERAL INFORMATION</b> .....	5 - 6
<b>BEGINNING TO GROW</b> .....	7 - 8
Newcomer Night .....	8
Membership Class .....	8
New Member Retreat .....	8
<b>LEARNING IN COMMUNITY</b> .....	9 - 18
Small Groups .....	10
The Bridge .....	10
LIVE 14 .....	11
Discipleship Roundtable .....	11
Big Groups .....	12
Men .....	15
Women .....	16
Marriage .....	17
Singles .....	18
<b>TRAINING FOR GROWTH</b> .....	19 - 24
THINK 14 .....	20
Soul Care Training .....	21
College Park Institute .....	22-23
Trinity Extension Campus .....	23
Pre-Marital Counseling .....	23
Journey In Missions .....	24
Financial Planning Assistance .....	24
<b>MAPS</b> .....	25 - 26

# GENERAL INFORMATION

---

## NEW TO COLLEGE PARK?

Do you desire to learn more about College Park Church? Please stop by our Guest Reception area after one of our three services, grab a drink, ask for a Welcome Brochure, and experience how we strive to make a big church feel small.

## FINDING YOUR WAY AROUND

On the map in the back of this booklet, take note of the following areas that will help you navigate your way around our campus.

- »» **guest reception area** - have a cup of coffee and meet the friendliest folks around. -They'd love to hear your story and share a little about our story.
- »» **commons** - our connecting space - take a seat and relax a little
- »» **the park/check-in** - the park serves as the hub of our children's ministries. Stop by the check-in desk if you have questions.

## PLEASE NOTE

If registration is required for one of the events listed in the following pages, the following symbol will appear: **R**

BUT GROW IN THE GRACE AND KNOWLEDGE OF OUR LORD  
AND SAVIOR JESUS CHRIST. TO HIM BE THE GLORY BOTH NOW  
AND TO THE DAY OF ETERNITY. AMEN.

2 PETER 3:18

## OUR PASTORAL STAFF

Mark Vroegop **LEAD PASTOR**

Eric Anderson **PASTOR OF WORSHIP**

Don Bartemus **PASTOR OF COMPASSION MINISTRIES**

Joe Bartemus **PASTOR OF THEOLOGICAL DEVELOPMENT**

Bill Dinsmore **EXECUTIVE PASTOR OF MINISTRY**

Nate Irwin **PASTOR OF GLOBAL OUTREACH**

David Michael **PASTOR FOR NEXT GENERATIONS**

Joe Wittmer **PASTOR OF STUDENT MINISTRIES**

Andrew Rogers **PASTOR OF SOUL CARE**

Mark Schuitema **PASTOR OF COMMUNITY LIFE**

Dale Shaw **PASTOR OF LOCAL OUTREACH**

Bruce Smith **EXECUTIVE PASTOR OF OPERATIONS**

## CONNECT WITH COLLEGE PARK

### MAIN BUILDING

2606 West 96th Street  
Indianapolis, IN 46268

### OFFICE HOURS

Monday - Friday: 8:30 a.m. - 5 p.m.

[office@yourchurch.com](mailto:office@yourchurch.com)

### MINISTRY CENTER

3600 West 96th Street  
Indianapolis, IN 46268

**PHONE** 317.875.0282

**FAX** 317.875.0605

### COLLEGE PARK ONLINE

**Web** [yourchurch.com](http://yourchurch.com)

**Blog** [yourchurch.com/blog](http://yourchurch.com/blog)

**Twitter** [@collegeparkindy](https://twitter.com/collegeparkindy)

**Facebook** [facebook.com/CollegeParkIndy](https://facebook.com/CollegeParkIndy)

**Photographs** [collegeparkchurch.smugmug.com](http://collegeparkchurch.smugmug.com)

# BEGINNING TO GROW

We want to make sure you feel at home and to help you find what you're looking for. Check out the offerings on the next page that are intended to give you information about our church, our ministry opportunities, and our Christian faith.

**WE ENCOURAGE YOU  
TO GET STARTED!**

## NEWCOMER NIGHT **R**

It's a fun night to get a glimpse of what community is like at College Park. Meet others new to the church, as well as staff and current members. Share a meal and ask questions to find out more about us.

**WHEN** The third Friday each month // 6:30 p.m. - 8:30 p.m.

**LOCATIONS & REGISTER** [yourchurch.com/connect](http://yourchurch.com/connect)

**QUESTIONS** [jbrake@yourchurch.com](mailto:jbrake@yourchurch.com) // 317.875.0282 x 164

## MEMBERSHIP CLASS **R**

Find out about our mission, core values, and ministry opportunities. Whether you intend to join or simply want to learn, it's one of the best ways to discover formal aspects of life at College Park.

**WHEN** October 4 (our last class of 2014) // 9 a.m. - 1 p.m. (includes lunch)

**LOCATION & REGISTER** [yourchurch.com/connect](http://yourchurch.com/connect)

**QUESTIONS** [jbrake@yourchurch.com](mailto:jbrake@yourchurch.com) // 317.875.0282 x 164

## NEW MEMBERS RETREAT **R**

Our annual New Members Retreat is a great weekend to enjoy your new College Park family. It's held once again this year at Life Action Camp in Buchanan Michigan. We'll eat, play, worship, and camp together. Rob Loy (elder and ABF teacher) will bring us messages from God's Word.

You'll stay in some pretty sweet cabins and have plenty of time to canoe, hike, sit around the fire, and enjoy the wonderful settings around the camp. Registration is \$30 per person. A family of 4 or more only pays \$120. Sign up in May.

**WHEN** Sign up in May. Anyone who has joined anytime in 2013-2104 can sign up.

**REGISTRATION** \$30 per person. A family of four or more only pays \$120.

**QUESTIONS** [jbrake@yourchurch.com](mailto:jbrake@yourchurch.com) // 317.875.0282 x 164



# LEARNING IN COMMUNITY

Community is God's idea. It began with the Trinity, was established in the garden of Eden with Adam and Eve, and has been God's desire for His people ever since. Community that is intentional and purposeful is what we seek here at College Park.

**FIND A COMMUNITY  
AND GET CONNECTED!**

# SMALL GROUPS

College Park small groups meet all over the city, every day of the week. With over 125 groups and counting, every group is unique and diverse, yet there is a common connection and a clear set set of essentials that make College Park small groups what they are.

To help our groups function biblically and effectively, we've established simple and clear guardrails that we call our "small group essentials":

1. Christ-centered & focused on the Word
2. Intentionally invasive
3. Living life together

**SIGN-UP** To learn more, go to [yourchurch.com/smallgroups](http://yourchurch.com/smallgroups)

**QUESTIONS?** Gary Meeks // [garymeeks@yourchurch.com](mailto:garymeeks@yourchurch.com)

## HOW TO JOIN A SMALL GROUP

- 1** Want to get plugged in immediately? Join a BRIDGE small group.
- 2** Looking for a permanent group? Complete the small group interest form at [yourchurch.com/smallgroups](http://yourchurch.com/smallgroups). You will be able to see all open spots in College Park groups that exist and be able to sign up for a spot in one of those groups
- 3** If a group is not available, feel free to email Gary Meeks at [garymeeks@yourchurch.com](mailto:garymeeks@yourchurch.com) to see if a group is forming in your area.

## THE BRIDGE (*for new attenders*)

The BRIDGE is a small group community for those newer to College Park that mirrors what we do throughout Community Life. We call it The BRIDGE because it creates an opportunity for you to cross over the challenging waters of being new into a place where you can meet others, share your journey of faith, and talk about how God's Word applies to your life. We believe small group community is God's design for how we're to live out our faith and to mature as Christ-followers.

**LOCATION** Several locations on the Northside

**QUESTIONS** [jrhea@yourchurch.com](mailto:jrhea@yourchurch.com) // 317.875.0282 x 170  
[yourchurch.com/groups/adults/small-groups/the-bridge](http://yourchurch.com/groups/adults/small-groups/the-bridge)

## CONNECTING COMMUNITY

---

### **LIFE|14 R**

Beginning August 10, LIVE|14: Mistaken Identity, will launch in its combination sermon series/small group format. For four weeks, we'll discuss how Christians are tempted to live out scripts based on an identity other than that found in Jesus Christ. We'll explore four major mistaken identities specifically, but use tools that can be applied to any false identity that tempts us. And we'll work together in groups to begin seeing those mistaken identities replaced with the Christian's true identity in Christ.

The LIVE content is designed for adults. However, we'll also have a track for youth to go through LIVE and a Family Devotional for children as well, so all ages can participate.

**WHEN** August 10 – August 31

**LEARN MORE** Email [garymeeks@yourchurch.com](mailto:garymeeks@yourchurch.com) for information.

### **DISCIPLESHIP ROUNDTABLE**

Discipleship is an essential part of following Jesus, but so many people have defined it in so many ways that it's almost a meaningless word in Christianity. Once each quarter, the Community Life leadership will gather with College Parkers interested in discipleship to discuss the church's vision for it, learn how College Parkers are engaging in discipleship, and encourage those involved to stay active in their ministry. *Open to all College Parkers.*

**WHEN** 11:30 a.m. // November 2, 2014

**WHERE** College Park Church chapel

**LEARN MORE** Email [jrhea@yourchurch.com](mailto:jrhea@yourchurch.com) for more information.

# BIG GROUPS

---

We invite you to supplement the weekly sermon with a Big Group. These community-oriented adult Bible fellowship classes allow you to engage in a smaller context that is centered on the Word and to enjoy a more intimate community and teaching.

Big Groups are as diverse as the people that are in them, so we recommend visiting several to get a feel for their structure. You can jump in at any time or try several before making a selection. Topics are subject to change. **Find the latest at [yourchurch.com/biggroups](http://yourchurch.com/biggroups).**

## **NEW WORLD** *taught by Jim Williams*

Younger adults. This class follows an interactive discussion format, typically working through a book of the Bible, followed by time in small groups for further discussion and prayer. Groups also meet for fellowship outside of Sunday morning.

**TIME** 9:45 a.m.      **ROOM** B5-B6

## **20SOMETHINGS** *taught by Bob Martin and the 20s teaching team*

This Sunday morning class is made up of mostly singles and involves teaching and an interactive class format. Social and service events occur throughout the year, and a variety of small groups (men, women, mixed) meet weekly or bi-weekly in a number of locations throughout Indianapolis.

**TIME** 9:45 a.m.      **ROOM** Ministry Center

## **BE ONE** *taught by Jim Milligan/Todd Ruetz*

This class is made up of adults and follows a discussion format. It provides the opportunity to connect with smaller groups, including activities outside of Sunday mornings.

**TIME** 9:45 a.m.      **ROOM** Chapel B

**ELEUTHEROS** *taught by Newt Crenshaw*

This class is mostly couples but is open to all. The class studies books of the Bible and other books as well. There are a number of community activities for men, women, and families.

**TIME** 9:45 a.m.      **ROOM** E|106

**BIBLE STUDY** *taught by Dave Crichlow*

This class covers books of the Bible and includes the teacher and class seeking the meaning of the book and its application. Various ages.

**TIME** 9:45 a.m.      **ROOM** E|101

**TRUTH SEEKERS** *taught by Phill Frye*

This class studies books of the Bible and biblical topics and applies them to the needs of class participants through lecture and discussion.

**TIME** 9:45 a.m.      **ROOM** E|104

**BIBLE STUDY** *taught by Jim Nossett*

This class is mostly lecture/teaching in format with additional times of fellowship. The teacher deals with books of the Bible and makes them relevant to the group. Various ages.

**TIME** 9:45 a.m.      **ROOM** East Room B (S|106B)

**KOINONIA** *taught by Joe Bartemus*

This class generally goes through a book of the Bible, and the teacher reviews the text and offers questions regarding the application of the passage.

**TIME** 9:45 a.m.      **ROOM** Chapel A

**POST-NUPTIALS** *taught by Bob & Karen Pourcho; Vance & Mindy McLarren*

Tailored to meet the needs of young marrieds & young families, our class will encourage you to grow deeper in your faith, build relationships, and live with purpose. Ongoing topics alternate between marriage studies, topical issues, and books of the Bible. Our Fall 2014 series, beginning September 7th, is The Heritage by Otis Ledbetter.

**TIME** 9:45 a.m.      **ROOM** E|110

**BIBLE STUDY** *taught by Rob Loy*

Various age groups in this class. This class features a lecture/teaching format, with scheduled fellowship time.

**TIME** 9:45 a.m.      **ROOM** East Room A (S|106 A)

**COMPASS** *taught by Jim and Barb Standish*

A group focused on singles in their 30s and 40s who are interested in developing a deeper walk with Christ, while also developing a community of believers within College Park Church.

**TIME** 11:30 a.m.      **ROOM** E|110

# MEN

---

Our goal is for you to grow in your walk with Jesus and in significant, accountable relationships with other men, so take the initiative and join a Bible study, find a mentor, and attend some events with other College Park men.

## MEN'S BIBLE STUDIES

Looking for a place to connect with other men? Check out our Men's Bible studies that take place on Wednesdays, Thursdays, Fridays, and Saturdays.

**LEARN MORE** [yourchurch.com/mensbiblestudies](http://yourchurch.com/mensbiblestudies)

## AFTER ADAM: GOD'S BLUEPRINT FOR MEN **R**

What does the Bible teach about God's design for men? How do we understand manhood in light of the Fall and the Cross? Based on our LIVE|14 Identity series, College Park is hosting a mini-conference for men to explore these questions. Using the first three chapters of Genesis, we'll see how God has designed men to relate to God, to women, and to the creation.

**WHEN** 8:15 a.m. // Saturday, August 23

**LOCATION** College Park Chapel

**LEARN MORE** Email [jrhea@yourchurch.com](mailto:jrhea@yourchurch.com) for more information.

## WANT TO GROW YOUR MARRIAGE?

>>> Check the Marriage page for specific opportunities

*Keep a lookout for registration information on all of these upcoming events at [yourchurch.com](http://yourchurch.com)!*

# WOMEN

---

The mission of our women's ministry is to ignite a passion to follow Jesus in the hearts of women. We seek to do that through exalting Christ through the study of His Word, experiencing community, and embracing our call to go and serve.

## WOMEN'S BIBLE STUDIES **R**

There are fourteen different studies offered this spring. Choose a morning or evening study offered on Tuesdays and Wednesdays. Go online to view a full list of class descriptions and locations.

**WHEN** Various times // Starts September 9

**REGISTER** [yourchurch.com/womensbiblestudies](http://yourchurch.com/womensbiblestudies)

## MOMS CONNECTION **R**

Moms Connection is the new face of our Mothers of Pre-schoolers (MOPS) group at College Park beginning in fall 2014. The name of our group will change, but the community will not! Two similar groups will be available, meeting the needs of moms in different phases of life.

### STEP 1: MOMS OF BABIES, TODDLERS, AND PRESCHOOL

Moms of babies, toddlers, and preschoolers will meet to enjoy food and fellowship, creative activities, speakers, and discussion. This group meets every 1st and 3rd Thursday of the month from 9:30 a.m. to 11:30 a.m. Any mom with a child who is not yet in first grade is welcome to join Step 1 of Moms Connection, but note that there is a waiting list.

### STEP 2: MOMS OF ELEMENTARY AND UP

This group is designed for those moms who have "outgrown" Moms Connection Step 1 and will meet on the 2nd and 4th Thursday of each month from 9:30 a.m. to 11:30 a.m. Moms with elementary (and older) kids will meet for a light brunch, speakers, and discussion. Topics will be geared toward moms with school-aged children, who face new challenges as their kids grow older. Any mom with a child in first grade or older will be able to join Step 2 of Moms Connection.

**REGISTER** [yourchurch.com/momsconnection](http://yourchurch.com/momsconnection)

**CONTACT** Emily Weller, [eweller@yourchurch.com](mailto:eweller@yourchurch.com)



# MARRIAGE

---

At College Park, we're committed to helping men and women grow in Christ-likeness and to grow their marriages in a way that would honor God and bring about the depth and intimacy that He desires.

**REGISTER** [yourchurch.com/marriage](http://yourchurch.com/marriage)

## **PURSUING A CROSS-CENTERED MARRIAGE** **R**

Come and join other couples as together you explore the foundation for a Christ-centered marriage. This five-week class will help you grow your marriage no matter what your life stage or how long you've been married. Class led by Chuck and Tillie Pyatte

**WHEN** 11:30 a.m. // Sundays, September 14 - October 26

**LOCATION** B5

## **BIBLICAL FOUNDATIONS OF MARRIAGE** **R**

Come hear a panel of College Park couples discuss an issue related to having a properly grounded marriage. They will field questions from Community Life Pastor Mark Schuitema and from the audience. Various panelists.

**WHEN** 9:45 a.m. // Sunday, December 7

**LOCATION** Chapel

## **MARRIAGE ENCOUNTER DESSERT NIGHT** **R**

Marriage Encounter Dessert Nights exist to give couples a recharge in their marriage, encouraging people to keep their eyes on Jesus and the glory of God. A little dessert doesn't hurt, either. Email [garymeeks@yourchurch.com](mailto:garymeeks@yourchurch.com) for further details. Childcare not included.

**WHEN** You will be able to choose from different nights in homes, covering a wide variety of topics between mid-September and early October.

# SINGLES

---

Many College Park singles are looking for ways to connect and grow alongside other single Christ-followers. We have created a number of opportunities for you to connect with other College Parkers, from events to Small Groups to Sunday morning big groups.

>>> For more information or questions, contact Singles Ministries Coordinator Bob Martin at [bmartin@yourchurch.com](mailto:bmartin@yourchurch.com) or 317.875.0282.

## ACTIVE ADULTS **R**

Active Adults is a community of spiritual encouragement and service for those age 55 and over, retired or semi-retired, single, widowed and couples. Throughout the year, Active Adults hosts events to build community, encourage one another, and serve others.

**WHEN** Various times and locations

**QUESTIONS?** Karen Davis // [bkdavis3201@gmail.com](mailto:bkdavis3201@gmail.com)

**REGISTER** [yourchurch.com/activeadults](http://yourchurch.com/activeadults)

# TRAINING FOR GROWTH

We never want to be a church that's a mile wide yet an inch deep. The following opportunities cover a variety of topics in the walk of the Christian life.

**TAKE YOUR GROWTH  
TO THE NEXT LEVEL!**



# THINK | 15

*Special Speaker – Dr. D.A. Carson*

Dr. Carson is our first THINK speaker to return. His ministry during THINK|11 was a great blessing. He is a professor at Trinity Evangelical Divinity School in Chicago. You will be blessed as he ministers the Word to us.

THINK|15 will also include kidTHINK, our third annual program for kids in kindergarten through grade six.

**WHEN** February 27- March 1, 2015

**REGISTER** Beginning January 4, 2015 at [yourchurch.com/think15](http://yourchurch.com/think15)

SPOTLIGHT WEEKEND

# SOUL CARE TRAINING

---

Soul Care Training classes are designed to help you grow in maturity. They will also equip you to help others grow. They will help you become more useful to God in ministering His all-sufficient Word to others.

## **GROWING 101: HELPING PEOPLE GROW** **R**

1. What Makes Biblical Counseling Unique?
2. The Origin and Purpose of Biblical Counseling & Qualities of a Biblical Counselor.
3. How To Grow and Change & Issues of the Heart
4. The Doctrine of Progressive Sanctification
5. Key Elements 1 & 2: Gather Data, Discern Problems
6. Key Elements 3 & 4: Establish Involvement, Give Hope
7. Key Elements 5 & 6: Give Instructions, Assign Homework
8. Guilt and Repentance
9. Trials and Suffering
10. A Biblical View of Anger

**WHEN** Sundays, 9:45 a.m. -11a.m. // September 7 - November 9

**WHERE** Chapel C

**REGISTER** [yourchurch.com/Growing100](http://yourchurch.com/Growing100)

# COLLEGE PARK INSTITUTE

---

College Park Institute is the teaching branch of College Park Church that brings theological training opportunities to everyone in our church.

## **SYSTEMATIC THEOLOGY**

This College Park Institute class will help the students to learn systematic theology.

**WHEN** Tuesdays, 7 - 8:30 p.m. // September 23 – December 9, 2014

**LOCATION** East Room (S|106 B)

**TEACHER** Joe Bartemus

## **DO IT YOURSELF HEBREW**

Intro into Old Testament language and study tools.

**WHEN** Tuesdays, 7 - 8:30 p.m. // October 14 – January 27, 2015

**LOCATION** East Room (S|106 A)

## THEOLOGY BASICS SERIES

A four part video series on the basic elements of Christianity (12-15 min). Followed by a discussion.

**HOW DID IT ALL GET STARTED?** (Creation)

**WHAT WENT WRONG?** (The Fall)

**WHAT IS THE SOLUTION TO SIN IN THE WORLD?** (Redemption)

**HOW IS IT GOING TO END?** (Restoration)

**TEACHERS** Mark Vroegop & Joe Bartemus

**LOCATION** [yourchurch.com/theology](http://yourchurch.com/theology)

## TRINITY EXTENSION CAMPUS

---

College Park Church hosts an extension site for Trinity Evangelical Divinity School (TEDS) in Deerfield, Illinois. Students can earn a Master of Arts in Christian Studies or a Certificate in Biblical Studies.

- »» You can receive a degree from one of the best evangelical seminaries in the country.
- »» TEDS will provide their own professors, many of whom teach at the Chicago campus.
- »» You can study while maintaining your job and are not required to move—classes are on Friday evening and Saturday all day—generally four weekends per semester, per class.

**WHEN** Starts August 22 // Fridays, 6 p.m. - 9 p.m. // Saturdays, 9 a.m. - 5 p.m.

**SIGN UP** For class listings and detailed information go to [yourchurch.com/trinityextension](http://yourchurch.com/trinityextension).

**QUESTIONS** [kalexander@yourchurch.com](mailto:kalexander@yourchurch.com) // 317.532.8610

# GOING DEEPER

These specialty trainings are offered on occasion for a specific topic or interest group. Consider these opportunities, and commit yourself to growing deeper in the Lord.

## **PRE-MARITAL COUNSELING** *taught by Jeff & Pam Bryant* **R**

This class is required for all engaged couples getting married at CPC and is strongly encouraged for every engaged couple who calls College Park their home church. This class covers the basic foundations of biblical marriage, communication, the roles of husbands and wives, and sexual intimacy in marriage. There is a cost of \$50 per couple (due after the class begins, check payable to CPC) for this class which covers materials, resources and an on-line assessment.

**WHEN** Sundays, 8 a.m. // Fall: September 7 - October 19  
Winter: January 18 - March 1, 2015

**LOCATION** East Room

**REGISTER** [yourchurch.com/marriage](http://yourchurch.com/marriage)

## **JOURNEY IN MISSIONS** **R**

Our monthly missions fellowship is led by Nate Irwin, Pastor of Global Outreach, and is a great opportunity to learn about missions and explore your calling to go.

**WHEN** 6:30 - 8:30 p.m. // 2nd Monday each month, September - May

**LOCATION** S|110

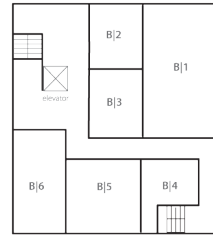
## **FINANCIAL PLANNING ASSISTANCE**

Do you need help balancing your budget? Are you in deep financial waters, or do you just need some help thinking through your next steps? We have a group of godly financial counselors that can help you map out your finances and chart a new course.

**LEARN MORE** [yourchurch.com/biblicalcounseling](http://yourchurch.com/biblicalcounseling)



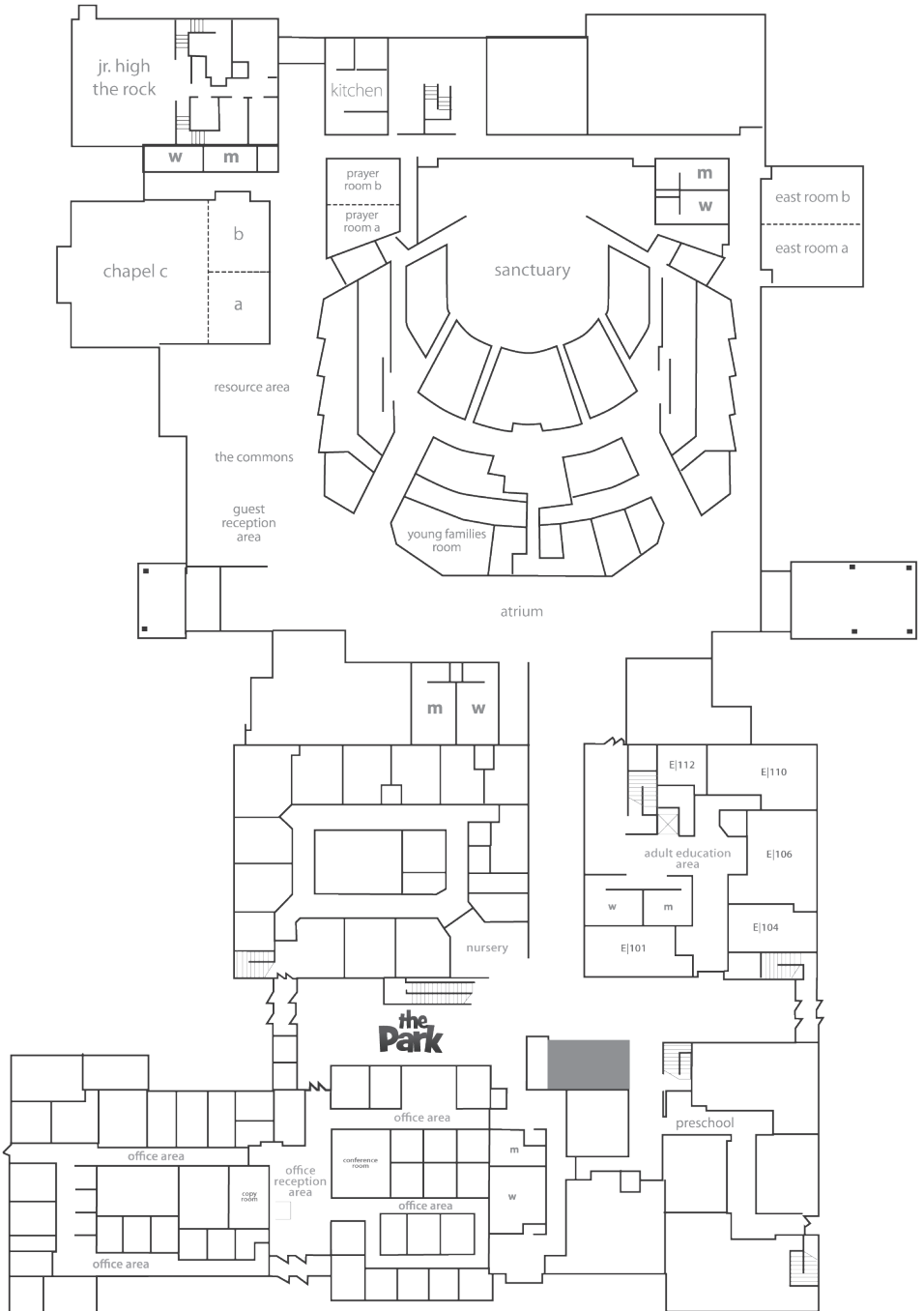
# FINDING YOUR WAY AROUND COLLEGE PARK CHURCH



basement



second floor





college park church

**2606 West 96th Street  
Indianapolis, IN 46268**

Office Hours: Mon - Fri : 8:30 a.m. - 5:00 p.m.  
P: 317.875.0282 | F: 317.875.0605  
[office@yourchurch.com](mailto:office@yourchurch.com)

**[yourchurch.com](http://yourchurch.com)**