



mission.
expansion
project

□ Taking our mission of igniting a passion to follow Jesus broader and deeper

From ten families at the Holiday Inn in 1985 to a church ministry of over 3200 people with a global impact, God has seen fit to bless College Park Church in amazing ways. And the greatest blessing has been the lives radically changed by the power of the Gospel. **Spiritual opportunities must never be taken for granted;** they should be joyfully embraced with a blood-earnest, holy, and sober resolve.

We are living in a historic moment in the life of our church. Word about what God is doing has spread throughout our community. We are making a major difference in the neighborhood of Brookside, and we are part of contemporary missions history through our efforts to reach unreached people groups around the world. **Our mission of igniting a passion to follow Jesus is contagious because it is compelling!**

This brochure summarizes our Mission Expansion Project, a stewardship project to simply add more **space to accomplish the critical mission God has given us.** This is not a “field of dreams” kind of project – “If you build it, they will come.” This is a project to meet immediate and pressing needs of our growing church while making room for more people in the future.

As you prayerfully read through this material, my prayer is that your heart will be reminded of the importance of what we are doing and the real stewardship of this moment in our church’s history. I want to invite you to join the movement of God at our church. Help us expand our mission even further – for the glory of God!

Joyfully,



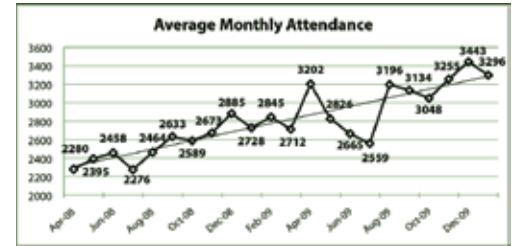
Mark Vroegop

“To whom much is given...much will be required.” - Luke 12:48



the opportunity

Our mission is contagious, and there is a clear sense of movement. God has brought us a season of growth following a season of refinement, and we have a historic opportunity for organic spiritual growth that is both broad and deep.



- 44% attendance growth over last 18 months

- Average monthly attendance of 3222 since August '09

PEOPLE AREN'T JUST COMING AND SEEING, THEY'RE CONNECTING INTO THE BODY.

- Over 400 new members since April '08

- Over 100 people baptized since April '08

- Over 25% increase in volunteer involvement in key areas such as Next Generations and First Hand ministries

- Nearly 900 giving units contributed to the '09 Christmas Offering in Togo

- Over 850 people involved in a small group



the mission

College Park Church's compelling mission is to **ignite a passion to follow Jesus**. We strive to fulfill that mission through exalting Christ, experiencing community and embracing a calling.

We have an unprecedented opportunity to impact the kingdom of God in people's lives. We are poised in the city of Indianapolis and the Midwest to make a substantial global and local impact.



□ governing values for growth

As we prayed, planned and looked toward the future, we were guided by these values:

- 1 Stewardship of the Present** – we need to be the best stewards of the people, ministries, and resources that God has given us.
- 2 Make a Big Church Small** – we need to intentionally work at connecting people from a crowd to a community.
- 3 Preserve our Core DNA** – we need to protect the unique and helpful dynamics that have made College Park Church what it is today.
- 4 Maximize our Property** – we need to fully utilize the prime piece of property that we've been given.
- 5 Flexibility in our Future** – we need to plan and think in such a way that we allow God to define our future.
- 6 Expanded Influence** – we need to position College Park Church for greater influence in our city, nation, and world.





In 2009, our Elders developed and began implementing a long-term strategy for growth. We've already taken the first step.



long-term growth strategy



Worship2 – upgraded & expanded overflow room for total worship capacity of 3400



Facility Expansion – fully utilize our 96th and Towne main campus with an expanded facility for capacity of 5400



Multi-site+Church Planting – utilize multi-site venues and church-planting for capacity of 5400+





Features

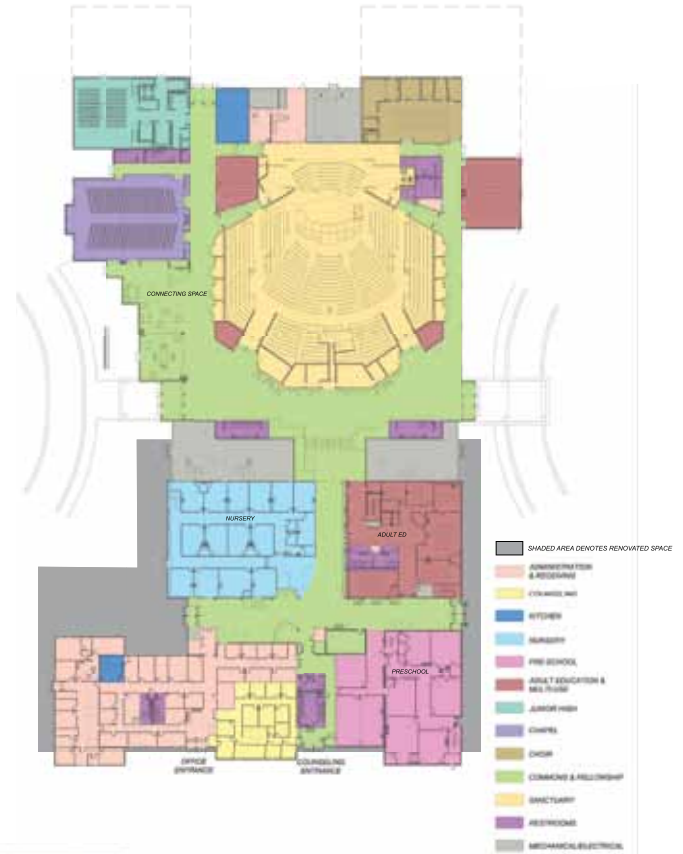
- Values-driven
- Comprehensive design
- 1800-seat sanctuary
- Renovate existing space
- Connecting space

Area

	% of capacity
increase	
Worship	101%
Connecting Space	400%
Adult Education	62%
Elementary	100%
Preschool	45%
Nursery	79%

WORSHIP SPACE

- 1800-seat sanctuary doubles capacity each service
- Intimate configuration & similar atmosphere as current space



This values-driven design provides flexible and comprehensive solutions across ministry areas while preserving our cultural DNA.

● **CONNECTING SPACE**

- Flexible space for experiencing community on Sunday & during week
- Clear main entrance creates welcoming environment for visitors



● **PRAYER**

- Throne of Grace room adjacent to Sanctuary for prayer during services
- Private response room for post-service prayer & counseling



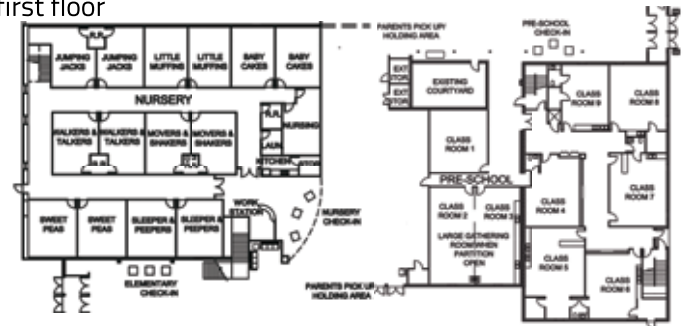
building plans



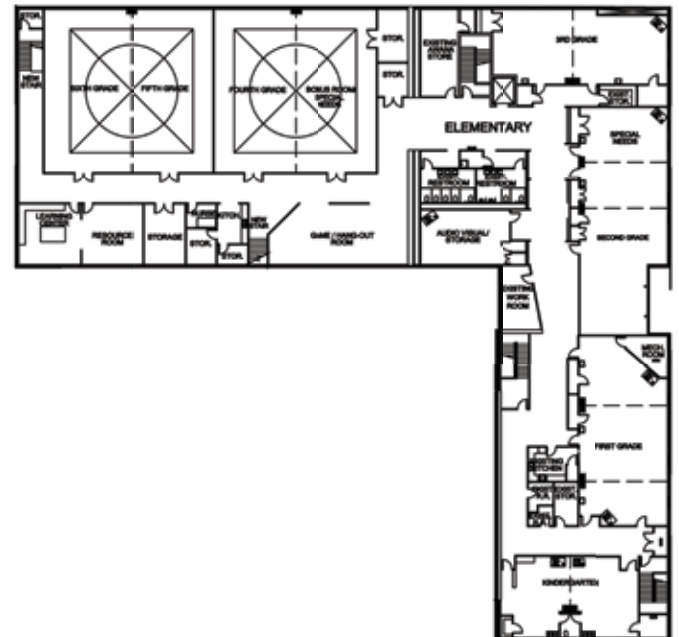
CHILDREN'S SPACE

- 13 additional rooms and over 12,000 additional sq. ft. across all age areas
- Improved safety, security & flow: one check-in & point of entry

first floor

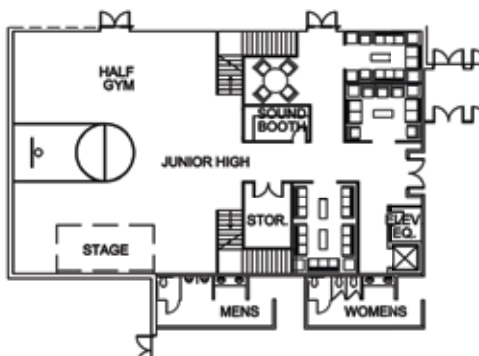


second floor



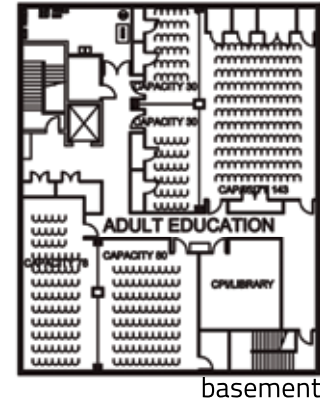
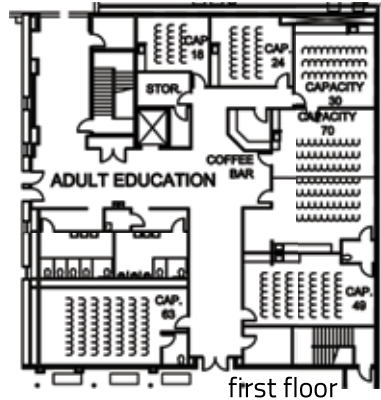
JR. HIGH

- Multi-use space with activity center & gym
- Separate rooms for discussion & small groups will enhance student community



● ADULT EDUCATION & COLLEGE PARK INSTITUTE

- 62% increase in dedicated class space (capacity for 26 classes)
- College Park Institute resource area for conferences, classes & training



● OFFICE/ADMINISTRATIVE AREA

- Centrally-located offices create greater synergy & alignment among staff
- Intimate configuration & similar atmosphere as current space

● COUNSELING/SOUL CARE

- 8 new lay counseling & mediation rooms in dedicated counseling space
- Separate, more private entrance

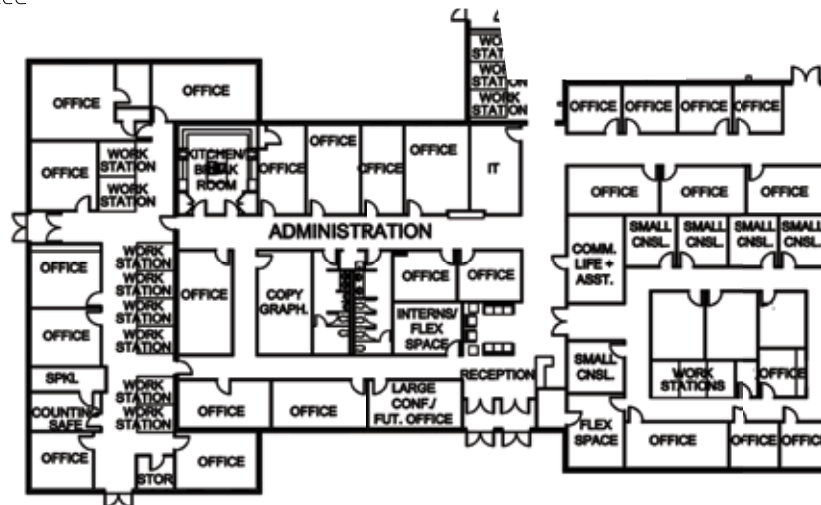




illustration of gift levels

How much will this cost?

Estimated Project Total: \$19 million

Includes:

Facility cost: (brick & mortar): \$17 million

Contingency costs, interest, etc.: \$2 million

How will we pay for this?

Minimum Funding Needed: \$14 million

Includes:

3-year commitments: \$12 - 14 million

'10-'13 budget contribution: \$0 - 2 million*

Maximum Debt Load: \$5 million

# of gifts	gift amount
2	\$1,000,000
3	\$500,000
4	\$250,000
5	\$150,000
7	\$100,000
10	\$75,000
15	\$45,000
20	\$30,000
30	\$25,000
40	\$15,000
55	\$12,000
80	\$7,500
100	\$4,500
130	\$3,000
150	\$2,100
165	\$1,200
Many	\$750

cumulative: \$12,000,000

*The funding levels for 3-year commitments and budget contributions are linked. Therefore, an increase in 3-year commitments would result in a decreased budget contribution.

Note: The above list of gifts is only one illustration of how College Park Church's individuals and families could collectively commit the funds necessary for the Mission Expansion Project.





key congregational decisions & next steps

There are two key decisions and meetings to determine where we go from here:

- Congregational vote on **January 31** for permission to raise funding
- Congregational vote on **March 21** to build based on commitment totals

dessert nights

If the January 31 congregational vote is affirmative, we will host a series of dessert nights. Dessert nights are the best way for you to learn more, interact, and ask questions about the project.

We want 100% of our church family to participate in a dessert night. So please register at: yourchurch.com.

what you can do:

- Pray
- Review materials & FAQs at yourchurch.com
- Participate in January 31 Congregational Meeting (6pm)

if Jan 31 vote is affirmative, take these next steps:

- Register for a dessert night
- Sign up for e-mail updates
- Return your commitment card on Sunday AM March 14
- Participate in March 21 Congregational Meeting (6pm)

Forty Days of Fasting & Prayer

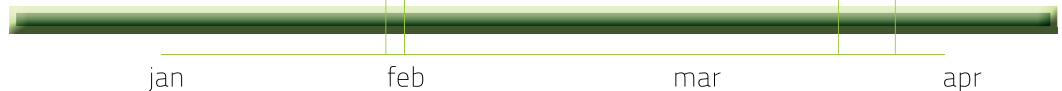
Congregational Meeting - Vote to raise funding / Jan 31

Congregational Meeting - Building Vote / Mar 21

Harvest Sunday - Commitments Collected Mar 14

Dessert Nights Feb 14 - Mar 7

timeline





2606 west 96th st. indianapolis, in. 46268 | 317.875.0282 | www.yourchurch.com | missionexpansion@yourchurch.com