

GROWING & CONNECTING AT COLLEGE PARK CHURCH

FALL 2015

CLASSES + OPPORTUNITIES

**HIM WE PROCLAIM,
WARNING EVERYONE
& TEACHING EVERYONE
WITH ALL WISDOM,
THAT WE MAY
PRESENT EVERYONE
MATURE IN CHRIST.**

COLOSSIANS 1:28

Our mission of igniting a passion to follow Jesus cannot be lived out in a vacuum. It is only lived out when we all connect and grow together.

Our discipleship vision for you as followers of Jesus is beginning, growing, maturing, and leading in your personal walk of faith.

We encourage you to take advantage of the many opportunities in this booklet to connect and grow in your faith at College Park Church.

We pray that each of you would find a place to connect and experience greater depth and intimacy with Jesus – building up one another in maturity in Christ.

TABLE OF CONTENTS

GENERAL INFORMATION 5 - 6

BEGINNING IN COMMUNITY 7 - 8

Newcomer Night 8

Membership Class 8

New Member Retreat 8

GROWING & MATURING IN COMMUNITY 9 - 19

Small Groups 10

The Bridge 11

Adult Big Groups 12

Men 13

Family Discipleship 13

Women 14

Marriage 15

Singles 16

Soul Care Training 17

Compassion 17-18

College Park Institute 18

Trinity Extension Campus 19

EMBRACING A CALLING 20-21

Journey In Missions 21

First Friday Prayer 21

SPOTLIGHT EVENTS 22-23

MAPS 24-25

FISHERS 26

GENERAL INFORMATION

NEW TO COLLEGE PARK?

Do you desire to learn more about College Park Church? Please stop by our Guest Reception area after one of our three services, grab a drink, ask for a Welcome brochure, and experience how we strive to make a big church feel small.

FINDING YOUR WAY AROUND

On the map in the back of this booklet, take note of the following areas that will help you navigate your way around our Indy location.

»» **guest reception area** - have a cup of coffee and introduce yourself to some people who are eager to meet you. They'd love to hear your story and share a little about our story.

»» **commons** - our connecting space - take a seat and relax a little.

»» **the park/check-in** - the park serves as the hub of our children's ministries. Stop by the welcome desk if you have questions.

PLEASE NOTE

If registration is required for one of the events listed in the following pages, the following symbol will appear: **R**

BUT GROW IN THE GRACE AND KNOWLEDGE OF OUR LORD
AND SAVIOR JESUS CHRIST. TO HIM BE THE GLORY BOTH NOW
AND TO THE DAY OF ETERNITY. AMEN.

2 PETER 3:18

OUR PASTORAL STAFF

Mark Vroegop **LEAD PASTOR**

Eric Anderson **PASTOR OF WORSHIP**

Don Bartemus **PASTOR OF COMPASSION MINISTRIES**

Joe Bartemus **PASTOR OF THEOLOGICAL DEVELOPMENT**

Bill Dinsmore **EXECUTIVE PASTOR OF MINISTRY**

Nate Irwin **PASTOR OF GLOBAL OUTREACH**

David Michael **PASTOR FOR NEXT GENERATIONS**

Andrew Rogers **PASTOR OF SOUL CARE**

Mark Schuitema **PASTOR OF COMMUNITY LIFE**

Dale Shaw **PASTOR OF LOCAL OUTREACH**

Bruce Smith **EXECUTIVE PASTOR OF OPERATIONS**

Joe Wittmer **PASTOR OF STUDENT MINISTRIES**

CONNECT WITH COLLEGE PARK

INDY

2606 West 96th Street
Indianapolis, IN 46268

OFFICE HOURS

Monday - Friday: 8:30 a.m. - 5 p.m.
office@yourchurch.com

FISHERS

Fall Creek Intermediate School
12011 Olio Road
Fishers, IN 46038

SUNDAY SERVICE

9:30 a.m.

MINISTRY CENTER

3600 West 96th Street
Indianapolis, IN 46268

PHONE 317.875.0282

FAX 317.875.0605

COLLEGE PARK ONLINE

Web yourchurch.com

Blog yourchurch.com/blog

Twitter @collegeparkindy

Facebook facebook.com/CollegeParkIndy

Photographs collegeparkchurch.smugmug.com

BEGINNING IN COMMUNITY

We want to make sure you feel at home and help you find what you're looking for. Check out the offerings on the next page that are intended to give you information about our church, our ministry opportunities, and our Christian faith.

**WE ENCOURAGE YOU
TO GET STARTED!**

NEWCOMER NIGHT **R**

It's a fun night to get a glimpse of what community is like at College Park. Meet others new to the church, as well as staff and current members. Share a meal and ask questions to find out more about us.

WHEN The third Friday each month // 6:30 p.m. - 8:30 p.m.

LOCATIONS & REGISTER yourchurch.com/connect

QUESTIONS jbrake@yourchurch.com // 317.875.0282 x 164

MEMBERSHIP CLASS **R**

Find out about our mission, core values, and ministry opportunities. Whether you intend to join or simply want to learn more about our church, it's one of the best ways to discover what it means to be a healthy member at College Park.

WHEN Nov. 14, 2015 // 9 a.m. - 1 p.m. (includes lunch)

LOCATION & REGISTER yourchurch.com/connect

QUESTIONS jbrake@yourchurch.com // 317.875.0282 x 164

NEW MEMBERS RETREAT **R**

Our New Members Retreat is a great weekend to enjoy your new College Park family. It's held this year at Life Action Camp in Buchannan, Michigan. We'll eat, play, worship, and camp together. Rob Loy (Adult Big Group teacher) will bring us messages from God's Word.

You'll stay in some pretty sweet cabins and have plenty of time to canoe, hike, sit around the fire, and enjoy the wonderful settings around the camp.

WHEN Sept. 11-13, 2015 // Details on website

REGISTRATION \$35 per person. A family of four or more only pays \$140 at yourchurch.com/newmembersretreat.

QUESTIONS jbrake@yourchurch.com // 317.875.0282 x 164

GROWING & MATURING IN COMMUNITY

Community is God's idea. It began with the Trinity, was established in the garden of Eden with Adam and Eve, and has been God's desire for His people ever since. Community that is intentional and purposeful is what we seek here at College Park.

**FIND A COMMUNITY
AND GET CONNECTED!**

SMALL GROUPS

College Park Small Groups meet all over the city each and every day of the week. With over 125 groups and counting, every group is unique, and yet there are three common characteristics that identify and connect all College Park Small Groups.

To help our groups function biblically and effectively, we've established simple and clear guardrails. These boundary markers are what we call our "Small Group Essentials."

1. Christ-centered & focused on the Word
2. Intentionally invasive
3. Living life together

SIGN-UP To learn more, go to yourchurch.com/smallgroups

QUESTIONS? Emily Weller // eweller@yourchurch.com

HOW TO JOIN A SMALL GROUP

When you're ready to join a Small Group, fill out our online Small Group Interest Form at **yourchurch.com/smallgroups**. The form gathers some basic information from you and then shows you all of our open Small Groups. You can choose one that works best for you based on location, meeting date and time, or demographic.

TRAINING FOR NEW LEADERS

We are always looking for qualified, spiritually mature Christ-followers who want to lead a Small Group and help others go deeper with Jesus. If you are interested in leading a group or learning more about leadership, we'd love to help you start the application and training process. We offer Small Group Leader trainings periodically throughout the year and we require all potential leaders to go through this training. Our fall training is Saturday, Sept. 19. To register, contact Emily Weller.

QUESTIONS? Emily Weller // eweller@yourchurch.com

THE BRIDGE *(for those newer to College Park)*

The BRIDGE is a small group community for those newer to College Park that mirrors what we do throughout Community Life. We call it The BRIDGE because it creates an opportunity for you to cross over the challenging waters of being new into a place where you can meet others, share your journey of faith, and talk about how God's Word applies to your life. We believe small group community is God's design for how we are to live out our faith and to mature as Christ-followers.

LOCATION Several locations on the Northside of Indy

QUESTIONS jbrake@yourchurch.com // 317.875.0282 x 164
yourchurch.com/thebridge

ADULT BIG GROUPS

These community-oriented adult Bible classes allow you to engage in a smaller context on Sunday mornings. You'll enjoy a more intimate community with teachings from the Scripture.

Big Groups are as diverse as the people that are in them, so we recommend visiting several to get a feel for their structure. You can jump in at any time or try several before making a selection. Topics are subject to change. **Find the latest at yourchurch.com/biggroups.**

NEW WORLD *taught by Jim Williams*

TIME 9:45 a.m. **ROOM** B5-B6

20SOMETHINGS *taught by Bob Martin and the 20s teaching team*

TIME 11:30 a.m. **ROOM** East Room A&B

BE ONE *taught by Jim Milligan/Todd Ruetz*

TIME 9:45 a.m. **ROOM** Chapel B

ELEUTHEROS *taught by David Hoffeditz*

TIME 9:45 a.m. **ROOM** E|106

BIBLE STUDY *taught by Dave Crichlow*

TIME 9:45 a.m. **ROOM** East Room B (S|106 B)

TRUTH SEEKERS *taught by Phill Frye*

TIME 9:45 a.m. **ROOM** E|104

KOINONIA *taught by Joe Bartemus*

TIME 9:45 a.m. **ROOM** Chapel A

POST-NUPTIALS *taught by Bob & Karen Pourcho; Vance & Mindy McLarren*

TIME 9:45 a.m. **ROOM** E|110

BIBLE STUDY *taught by Rob Loy*

TIME 9:45 a.m. **ROOM** East Room A (S|106 A)

COMPASS *taught by Jim and Barb Standish*

TIME 11:30 a.m. **ROOM** E|110

MEN

Our goal is for you to grow in your walk with Jesus and in significant, accountable relationships with other men. So take the initiative and join a Bible study, find a mentor, and attend some events with other College Park men.

MEN'S BIBLE STUDIES

Looking for a place to connect with other men? Check out our Men's Bible studies that take place on Wednesdays, Thursdays, Fridays, and Saturdays.

LEARN MORE yourchurch.com/mensbiblestudies

FAMILY DISCIPLESHIP

FOUNDATIONS IN PARENTING **R**

This seminar is designed to prepare parents for the dedication of their children at College Park Church. Discussion will focus on understanding the meaning of dedication, the promises made as parents, and the commitment of the church to join with parents as we pursue the joy of the next generation together.

WHEN Saturday, Sept. 26, from 8:45 a.m. - 12 p.m. at College Park Church

REGISTER yourchurch.com/childdedication

WOMEN

The mission of our women's ministry is to ignite a passion to follow Jesus in the hearts of women. We seek to do that through exalting Christ through the study of His Word, experiencing community, and embracing our call to go and serve.

WOMEN'S BIBLE STUDIES **R**

There are several different studies offered this fall. Choose a morning or evening study offered on Tuesdays and Wednesdays. Go online to view a full list of class descriptions and locations.

WHEN Various times // Starts Sept. 1 (registration opens Aug. 7)

REGISTER yourchurch.com/womensbiblestudies

MOMS CONNECTION **R**

Moms Connection is a place for moms to connect with the Lord and with one another over brunch, conversation, a speaker, and a craft. While our Step 1 program for moms of infants through preschoolers has a waiting list, Step 2 is open to moms of children in first grade and up. Registration is open.

REGISTER yourchurch.com/momsconnection

CONTACT Emily Weller, eweller@yourchurch.com

WOMEN NEXT DOOR

Is the Lord prompting you to reach out to the women in your neighborhood? We have the tools to help you initiate dialogue and host a Bible study for your neighbors. If you are interested in learning more, contact Cynthia Pizarro // cpcwomennextdoor@gmail.com.

WOMEN'S FALL EVENT **R**

Women of College Park are invited to join us for an evening of fellowship and encouragement. Connect with other women over dessert and worship through song, and hear from Karen Pourcho, our new Women's Ministry Director, as she teaches us from God's Word.

WHEN Monday, Sept. 21 // 6:30 p.m. // Sanctuary

LEARN MORE yourchurch.com/women

MARRIAGE

At College Park, we're committed to helping men and women grow in Christ-likeness, to grow their marriages in a way that would honor God, and to bring about the depth and intimacy that He desires.

LEARN MORE yourchurch.com/marriage

PURSUING A CROSS-CENTERED MARRIAGE **R**

Come and join other couples as together you explore the foundation for a Christ-centered marriage. This seven-week class will help you grow your marriage no matter what your life stage is or how long you've been married. Class led by Chuck & Tillie Pyatte.

WHEN 11:30 a.m. // Sundays, Sept. 13 - Nov. 8

LOCATION B5

PRE-MARITAL COUNSELING *taught by Jeff & Pam Bryant* **R**

This class is required for all engaged couples getting married at College Park Church and is strongly encouraged for every engaged couple who calls College Park their home church. This class covers the basic foundations of biblical marriage, communication, the roles of husbands and wives, and sexual intimacy in marriage. There is a cost of \$50 per couple (due after the class begins, check payable to College Park Church) for this class which covers materials, resources and an on-line assessment.

WHEN Sundays, 8 a.m. // Sept. 13 - Oct. 25

LOCATION East Room

REGISTER yourchurch.com/marriage

SINGLES

Many College Park singles are looking for ways to connect and grow alongside other single Christ-followers. We have created a number of opportunities for you to connect with other College Parkers, from events to Small Groups to Sunday morning big groups.

>> For more information or questions, contact Singles Ministries Coordinator Bob Martin at bmartin@yourchurch.com or 317.875.0282.

ACTIVE ADULTS **R**

Active Adults is a community of spiritual encouragement and service for those age 55 and over, retired or semi-retired, single, widowed and couples. Throughout the year, Active Adults host events to build community, encourage one another, and serve others.

WHEN Various times and locations

QUESTIONS Karen Davis // bkdavis3201@gmail.com

REGISTER yourchurch.com/activeadults

COLLEGE MINISTRY

We want to encourage men and women who are college age to passionately pursue God's calling in their lives, not just in the future, but right now. During the school year, we connect through Table Talk: Sunday lunches where we get together in a home for lunch, conversation, and applying the morning sermon to our lives.

WHEN Bi-weekly // Sundays at 1:45 p.m.

LEARN MORE yourchurch.com/collegeministry

20 SOMETHINGS

20somethings is a community of men and women at College Park Church in or around their 20s. There are three different elements to the 20somethings community: Sunday morning gatherings, social events, service activities, and small groups. Join us on a Sunday to learn more about this ministry.

WHEN Weekly // Sundays at 11:30 a.m. // East Room

LEARN MORE yourchurch.com/20somethings

SOUL CARE TRAINING

Soul Care Training classes are designed to help you grow in maturity, and will also equip you to help others grow. They will help you become more useful to God in ministering His all-sufficient Word to others.

GROWING 101: FOUNDATIONS FOR DISCIPLESHIP **R**

WHEN Sundays, 9:45 a.m. // Sept. 13

WHERE Chapel

REGISTER yourchurch.com/growing100

(Training is also available online at yourchurch.com/growing100resources)

GROWING 200 **R**

WHEN Wednesdays, 6:30 p.m. // Sept. 13

WHERE Chapel B

REGISTER yourchurch.com/growing200

COMPASSION

Compassion Ministries exist to help connect people in need with those who want to serve the body of Christ.

GRIEFSHARE: YOUR JOURNEY FROM MOURNING TO JOY

GriefShare is a 14-week focused support group for those living with the loss of a family member or friend. The structure of these meetings is three-fold: video content centered on a specific topic, focused discussion surrounding the video content, and workbook reflection.

WHEN Tuesdays, 6 - 8 p.m. // Sept. 15 - Dec. 15

WHERE E|112

QUESTIONS Carol McElroy // tmcm@att.net // 317.872.0717

COMPASSION

EMPLOYMENT MINISTRY

Taking a spiritual approach to job-search assistance, this ministry hopes to cut the search time in half for those who are unemployed or underemployed. Free professional assistance is offered to help job seekers create leads and develop their network, allowing them to effectively market their skills and find employment quickly.

WHEN Thursdays, 6:30 - 8 p.m.

WHERE E|104

QUESTIONS George Gordon // georgegordon@comcast.net

COLLEGE PARK INSTITUTE

College Park Institute is the teaching branch of College Park Church that brings theological training opportunities to everyone in our church.

BIBLICAL THEOLOGY

WHEN Wednesdays, 7 p.m. // Sept. 23

WHERE Chapel A

TEACHER Joe Bartemus

THEOLOGY BASIC SERIES

A four part video series on the basic elements of Christianity. (12-15 min). Followed by discussion

HOW DID IT ALL GET STARTED (Creation)

WHAT WENT WRONG? (The Fall)

WHAT IS THE SOLUTION TO SIN IN THE WORLD? (Redemption)

HOW IS IT GOING TO END? (Restoration)

TEACHERS Mark Vroegop & Joe Bartemus

LOCATION yourchurch.com/theology

TRINITY EXTENSION CAMPUS

College Park Church hosts an extension site for Trinity Evangelical Divinity School (TEDS) in Deerfield, Illinois. Students can earn a Master of Arts in Christian Studies or a Certificate in Biblical Studies.

- >>> You can receive a degree from one of the best evangelical seminaries in the country.
- >>> TEDS will provide their own professors, many of whom teach at the Chicago campus.
- >>> You can study while maintaining your job and are not required to move—classes are on Friday evenings and Saturdays all day—generally four weekends per semester, per class.

WHEN Starts Aug. 28 // Fridays, 6 - 9 p.m. // Saturdays, 9 a.m. - 5 p.m.

SIGN UP For class listings and detailed information go to yourchurch.com/trinityextension.

QUESTIONS kalexander@yourchurch.com // 317.532.8610

EMBRACING A CALLING

We never want to be a church that's a mile wide yet an inch deep. The following opportunities help us further understand the axiom "this is for that" — and figure out our own personal calling to go.

FIND YOUR CALL TO GO!

CULTIVATING A MISSIONS MINDSET

Consider these opportunities to broaden your cultural understanding and develop a heart for the nations.

JOURNEY IN MISSIONS

Our monthly missions fellowship is led by Nate Irwin, Pastor of Global Outreach, and is a great opportunity to learn about missions and explore your calling to go.

WHEN 6:30 - 8:30 p.m. // second Monday each month, Sept. - May

LOCATION S110

QUESTIONS Ron Page // rpage@yourchurch.com // 317.532.8579

FIRST FRIDAY PRAYER

Worshipping the Lord, then learning about and praying for our missionary family members are the goals of each time we meet.

We start out with a full dinner! Child care is available but families need to register beforehand.

WHEN The first Friday of each month // 6 - 7:45 p.m.

LOCATION College Park Ministry Center

SPOTLIGHT EVENTS

At College Park Church, we have cultivated a rhythm throughout our church year that helps us express different facets of the great gospel of Jesus Christ. Each spotlight event is clear in its aim and purpose. They help us connect and live together as a community defined by the Savior we think about, serve others through, live for, reach with, and who we desire to passionately follow.

LIVE | 15

AUGUST 2015

IGN  **TE** | 15

SEPTEMBER 11

 **REACH** | 15

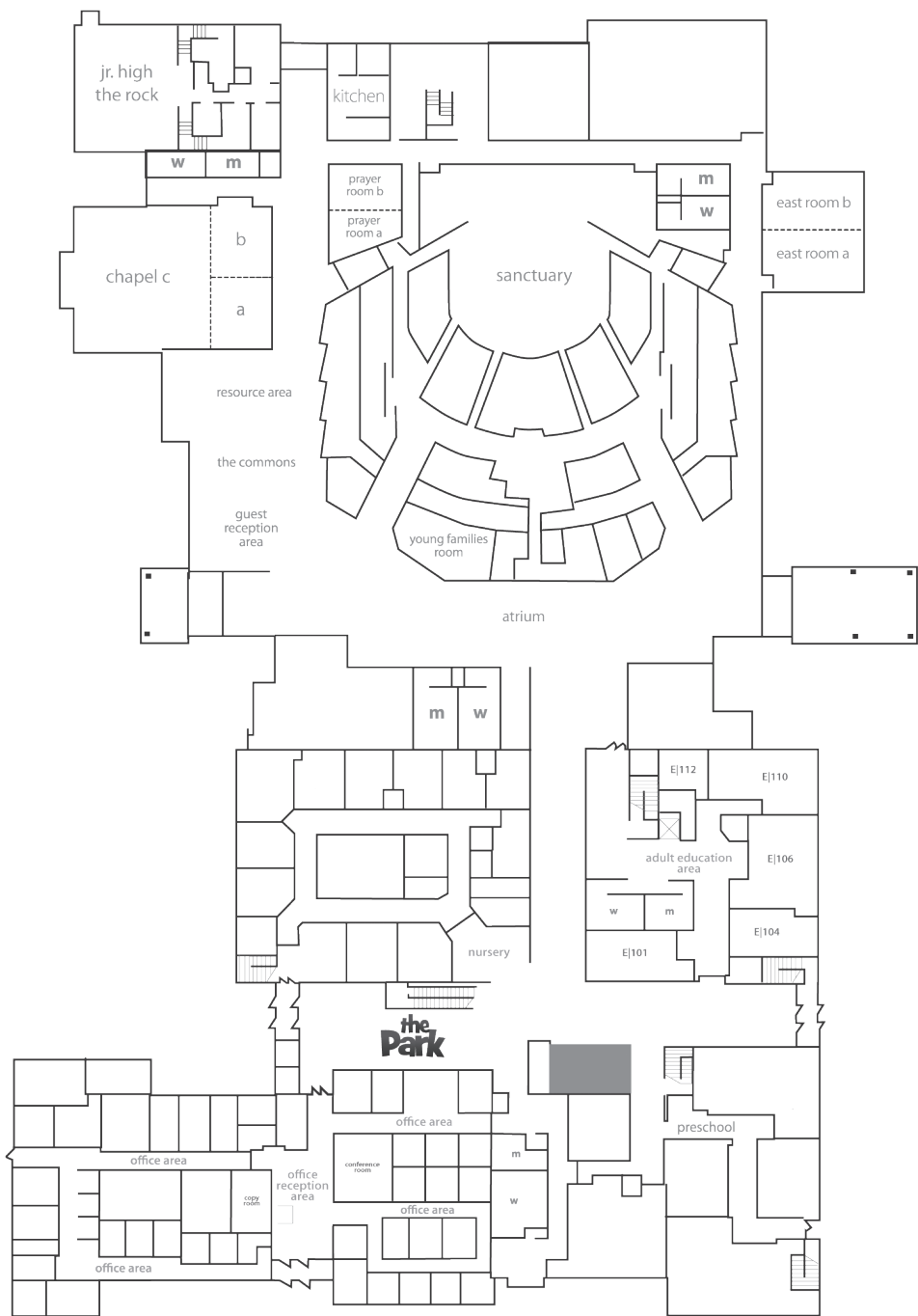
OCTOBER 11 & 18

THINK | 16

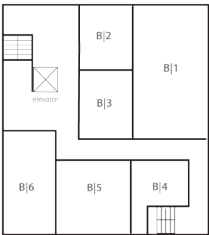
FEBRUARY 2016

SERVE | 16

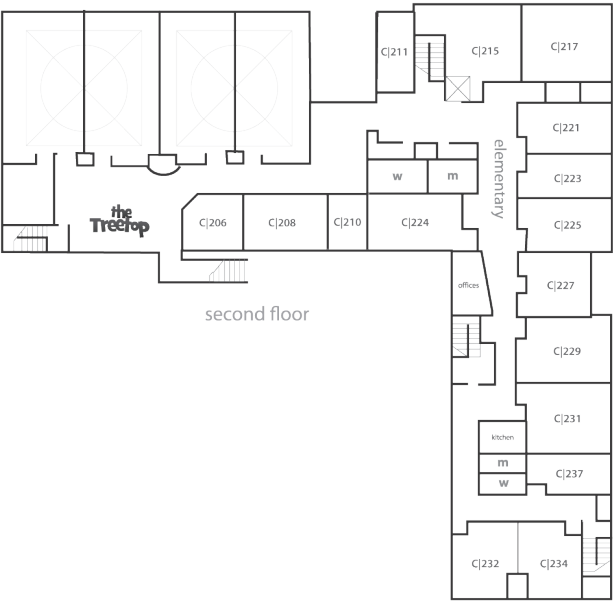
APRIL 2016



FINDING YOUR WAY AROUND COLLEGE PARK CHURCH INDY



basement



second floor

FISHERS

If you live in or near the northeast side of the Indy metro area, College Park Church now has a location in Fishers.

SERVICE TIME 9:30 a.m.

LOCATION Fall Creek Intermediate School

12011 Olio Road

Fishers, IN 46038

INFO yourchurch.com/fishers

QUESTIONS Contact one of the Fishers staff members below:

Dale Shaw, Pastor of Local Outreach // dshaw@yourchurch.com

Chris Beals, Campus Pastoral Resident // cbeals@yourchurch.com

Dustin Crowe, Local Outreach Coordinator // dcrowe@yourchurch.com

Tim Lukasiewicz, Campus Worship Leader // timl@yourchurch.com

SAVE THE DATE

SUNDAY, SEPTEMBER 27

30th ANNIVERSARY CELEBRATION SUNDAY

MEMBERS MEETING

SUNDAY, NOVEMBER 15



Indy Location
2606 West 96th Street
Indianapolis, IN 46268

Office Hours: Mon - Fri : 8:30 a.m. - 5 p.m.
P: 317.875.0282 | F: 317.875.0605
office@yourchurch.com

Fishers Location (Sunday only)
Fall Creek Intermediate
12011 Olio Road
Fishers, IN 46037

yourchurch.com