

GROWING &
CONNECTING
AT COLLEGE PARK CHURCH

FALL 2013

**HIM WE PROCLAIM,
WARNING EVERYONE
& TEACHING EVERYONE
WITH ALL WISDOM,
THAT WE MAY
PRESENT EVERYONE
MATURE IN CHRIST.**

COLOSSIANS 1:28

Our mission of igniting a passion to follow Jesus cannot be lived out in a vacuum. It is only lived out when we all connect and grow together.

We encourage you to take advantage of the many growth opportunities here at College Park – from introductory fellowship gatherings to learning in big or small communities. More in-depth opportunities, such as College Park Institute and the Growing 102/103 Soul Care training, will give you the tools to handle God’s word and apply it to the ebb and flow of life’s circumstances.

Our prayer is that each of you would find a place to connect and experience greater depth and intimacy with Jesus – building up one another in maturity in Christ.

TABLE OF CONTENTS

GENERAL INFORMATION	5 - 6
BEGINNING TO GROW	7 - 8
Newcomer Night	8
Membership Class	8
LEARNING IN COMMUNITY	9 - 18
Small Groups	10
Big Groups.....	11 - 14
Men	15
Women	16
Marriage	17
Singles	18
TRAINING FOR GROWTH	19 - 24
THINK 14	20
Soul Care Training.....	21
CPI: Church History.....	22
Trinity Extension Site.....	22
Personal Evangelism Training	23
Pre-Marital Counseling	23
Journey In Missions	24
Financial Planning Assistance	24
MAPS	25 - 26

GENERAL INFORMATION

NEW TO COLLEGE PARK?

Do you desire to learn more about College Park Church? Do you want to meet staff, pastors, and other attendees?

Please stop by our Guest Reception area after one of our three services, grab a drink, ask for a Welcome Brochure, and experience how we strive to make a big church feel small.

FINDING YOUR WAY AROUND

On the map in the back of this booklet, take note of the following areas that will help you navigate your way around our campus.

- >>> **guest reception area** - have a cup of coffee and meet the friendliest folks around. They'd love to hear your story - and if you'd like, share a little about ours.
- >>> **commons** - our connecting space - take a seat and relax a little
- >>> **the park/check-in** - the park serves as the hub of our children's ministries. Stop by the check-in desk if you have questions.

PLEASE NOTE

If registration is required for one of the events listed in the following pages, the following symbol will appear: **R**

BUT GROW IN THE GRACE AND KNOWLEDGE OF OUR LORD
AND SAVIOR JESUS CHRIST. TO HIM BE THE GLORY BOTH NOW
AND TO THE DAY OF ETERNITY. AMEN.

2 PETER 3:18

OUR PASTORAL STAFF

Mark Vroegop **LEAD PASTOR**
Eric Anderson **PASTOR OF WORSHIP**
Don Bartemus **PASTOR OF COMPASSION MINISTRIES**
Joe Bartemus **PASTOR OF THEOLOGICAL DEVELOPMENT**
Bill Dinsmore **EXECUTIVE PASTOR OF MINISTRY**
Nate Irwin **PASTOR OF GLOBAL OUTREACH**
Andrew Rogers **PASTOR OF SOUL CARE**
Mark Schuitema **PASTOR OF COMMUNITY LIFE**
Dale Shaw **PASTOR OF LOCAL OUTREACH**
Bruce Smith **EXECUTIVE PASTOR OF OPERATIONS**

CONNECT WITH COLLEGE PARK

MAIN BUILDING

2606 West 96th Street
Indianapolis, IN 46268

MINISTRY CENTER

3600 West 96th Street
Indianapolis, IN 46268

COLLEGE PARK ONLINE

Web yourchurch.com

Blog yourchurch.com/blog

Twitter [@collegeparkindy](https://twitter.com/collegeparkindy)

Facebook facebook.com/CollegeParkIndy

Photographs collegeparkchurch.smugmug.com

OFFICE HOURS

Monday - Friday: 8:30 a.m. - 5 p.m.

office@yourchurch.com

PHONE 317.875.0282

FAX 317.875.0605

BEGINNING TO GROW

We want to make sure you feel at home and to help you find what you're looking for. Check out the offerings on the next page that are intended to give you information about our church, our ministry opportunities, and our Christian faith.

**WE ENCOURAGE YOU
TO GET STARTED!**

NEWCOMER NIGHT **R**

A fun night to get a glimpse of what community is like at College Park. Meet others new to the church, as well as staff and current members. Share a meal and ask questions to find out more about us.

WHEN 6:30 p.m. - 8:30 p.m. // Meets the third Friday each month

LOCATIONS & REGISTER yourchurch.com/connect

QUESTIONS jbrake@yourchurch.com // 317.875.0282 x 164

MEMBERSHIP CLASS **R**

Find out about our mission, core values, and ministry opportunities. Whether you intend to join or simply want to learn, it's one of the best ways to discover formal aspects of life at College Park.

WHEN 9 a.m. - 1 p.m. (includes lunch) // October 5

LOCATION & REGISTER yourchurch.com/connect

QUESTIONS jbrake@yourchurch.com // 317.875.0282 x 164

LEARNING IN COMMUNITY

Community is God's idea. It began with the Trinity, was established in the garden of Eden with Adam and Eve, and has been God's desire for His people ever since. Community that is intentional and purposeful is what we seek here at College Park.

**FIND A COMMUNITY
AND GET CONNECTED!**

SMALL GROUPS

College Park small groups meet all over the city, every day of the week. With over 115 groups and counting, every group is unique and diverse, yet there is a common connection and a clear set of essentials that make College Park small groups what they are.

To help our groups function biblically and effectively, we've established simple and clear guardrails that we call our "small group essentials:"

1. Christ-centered & focused on the Word
2. Intentionally invasive
3. Living life together

SIGN-UP yourchurch.com/smallgroups

QUESTIONS? Gary Meeks // garymeeks@yourchurch.com

HOW TO JOIN A SMALL GROUP

- 1** Complete the online form at yourchurch.com/smallgroups
- 2** Gary Meeks will identify a group for you, based on the information you provide
- 3** You will be invited to visit a small group
(This process may take a few weeks)
- 4** If there is not yet a group available, you will be placed on a waiting list

BIG GROUPS

We invite you to supplement the weekly sermon with a Big Group. These community-oriented adult Bible fellowship classes allow you to engage in a smaller context that is centered on the word and to enjoy a more intimate community and teaching.

Big Groups are as diverse as the people that are in them, so we recommend visiting several to get a feel for their structure. You can jump in at any time or try several before making a selection. Topics are subject to change. **Find the latest at yourchurch.com/biggroups.**

NEW WORLD *taught by Jim Williams*

Younger adults. This class follows an interactive discussion format, typically working through a book of the Bible, followed by time in small groups for further discussion and prayer. Groups also meet for fellowship outside of Sunday morning.

TIME 9:45 a.m. **ROOM** B1

20 SOMETHINGS *taught by Bob Martin and the 20s teaching team*

This Sunday morning class is made up of mostly singles and involves teaching and an interactive class format. Social and service events occur throughout the year, and a variety of small groups (men, women, mixed) meet weekly or bi-weekly in a number of locations throughout Indianapolis.

TIME 9:45 a.m. **ROOM** Ministry Center

BE ONE *taught by Jim Milligan/Todd Ruetz*

When my mother died suddenly last year, our Be One classmates were so dear in lifting our family up in prayer and with phone calls and notes. Over the years this class has prayed for dying family members, illnesses, troubled marriages, lost jobs, kids who have strayed and a host of other prayer requests. We hold each other close. – Randy Sipe

This class is made up of adults and follows a discussion format. It provides the opportunity to connect with smaller groups, including activities outside of Sunday mornings.

TIME 9:45 a.m. **ROOM** Chapel B

ELEUTHEROS *taught by Newt Crenshaw*

Newt is a wise and mature leader who has been refined through many hard crucibles of experience, and that pours forth in his living and teaching in light of eternity. The class fellowship is very tight-knit and caring, and members are often helping and encouraging each other in many tangible and encouraging ways through the week. – Chris Dean

This class is mostly couples but is open to all. The class studies books of the Bible and other books as well. There are a number of community activities for men, women, and families.

TIME 9:45 a.m. **ROOM** E|106

BIBLE STUDY *taught by Dave Crichlow*

The first thing we liked about the class was the casualness and lots of laughing. But Dave prepares extensively and spends time before the Lord before he comes to us on Sunday. A great balance! I love to get into the study of the Word and various topics, and the Lord uses the class time to teach me and prompt me to pray. – Kathy Cartner

This class covers books of the Bible and includes the teacher and class seeking the meaning of the book and its application. Various ages.

TIME 9:45 a.m. **ROOM** E|101

TRUTH SEEKERS *taught by Phill Frye*

This class studies books of the Bible and biblical topics and applies them to the needs of class participants through lecture and discussion.

TIME 9:45 a.m. **ROOM** E|104

BIBLE STUDY *taught by Jim Nossett*

His depth of the subject matter . . . compels me to go over this material again later in the week and keep it in my heart. I feel there is a closeness in this class, whether social or to satisfy needs of the members, that is extraordinary because he and Lori work together as a team to make it happen. – Barb McGee

This class is mostly lecture/teaching in format with additional times of fellowship. The teacher deals with books of the Bible and makes them relevant to the group. Various ages.

TIME 9:45 a.m. **ROOM** East Room B (S|106B)

KOINONIA *taught by Joe Bartemus*

The things I like the most about this class are the interactive format, the teacher, and the classmates. We may not always agree on every point, but we have lively discussions without becoming disagreeable.

– Judy Pfaffenberger

This class generally goes through a book of the Bible, and the teacher reviews the text and offers questions regarding the application of the passage.

TIME 9:45 a.m. **ROOM** Chapel A

POST-NUPTIALS *taught by Bob and Karen Pourcho*

This class has made a difference in my life by creating good discussions between my husband and me that maybe we wouldn't normally have. Also, it has created opportunities to build strong bonds with other Christian women. – Rachel Brandli

This is a group of recently-married couples who study what the Bible has to say about growing deeper with God and with each other.

TIME 9:45 a.m. **ROOM** E|110

BIBLE STUDY *taught by Rob Loy*

No matter what the subject matter is or where he is teaching in God's Word, prepare to be challenged each week for God's faithfulness and His love through good and bad times. Knowing that you can have joy in the midst of daily living and that this isn't our final destination keeps me going. – Dody Prall

Various age groups in this class. This class features a lecture/teaching format, with scheduled fellowship time.

TIME 9:45 a.m. **ROOM** East Room A (S|106 A)

MEN

Our goal is for you to grow in your walk with Jesus and in significant, accountable relationships with other men, so take the initiative and join a Bible study, find a mentor, and attend some events with other College Park men.

MEN'S BIBLE STUDIES

Looking for a place to connect with other men? Check out our Men's Bible studies that take place on Wednesdays, Thursdays, Fridays, and Saturdays.

SIGN UP yourchurch.com/men

ANGER, PURITY, AND THE PURSUIT OF GOD **R**

This event is about seeing the relationship between our anger (silent or obvious), our purity, and how that relates to our pursuit of Jesus. Young men aged 12 and older are welcome to attend with their fathers.

WHEN 8:30 a.m. - 12 p.m. // Saturday, August 24

LOCATION Chapel

REGISTER yourchurch.com/events // Free, but you must register

ACT LIKE MEN CONFERENCE **R**

Speakers such as Mark Driscoll, Matt Chandler, and James MacDonald will challenge us to love our wives, pursue the lost, and live as godly men. Tickets are \$69.

WHEN November 8-9, 2013

LOCATION Indiana Convention Center

REGISTER jrhea@yourchurch.com // 205-641-3325

»» **SAVE THE DATE** Saturday, January 11, 2014 for our Men's Planning Time. Come learn how to plan the year spiritually for yourself and your family and maximize 2014 for the glory of God.

WOMEN

The mission of our women's ministry is to ignite a passion to follow Jesus in the hearts of women. We seek to do that through exalting Christ through the study of His Word, experiencing community, and embracing our call to go and serve. Join us for a weekly Bible study or smaller, one-on-one opportunities with others who desire to walk and grow together!

SIGN UP yourchurch.com/women

WOMEN'S BIBLE STUDIES **R**

There are 13 different studies offered this fall. Choose a morning or evening study offered on Tuesdays and Wednesdays. Go online to view a full list of class descriptions and locations.

WHEN Various times // Starts September 10

REGISTER yourchurch.com/WomensBibleStudies

MOTHERS OF PRESCHOOLERS (MOPS) **R**

MOPS exists to encourage, equip, and develop mothers of preschoolers in the name of Jesus Christ.

WHEN 9:30 a.m. - 11:30 a.m. // 1st & 3rd Thursday, September - May

LOCATION East Room

REGISTER yourchurch.com/mops

SIDE BY SIDE **R**

An evening of encouragement for women of College Park. Come and be encouraged to know God, get to know other women, and learn to serve in a greater capacity for the purposes of God.

WHEN 7 p.m. - 9 p.m. // Monday, September 23

LOCATION Chapel

REGISTER yourchurch.com/women

MARRIAGE

At College Park, we're committed to helping men and women grow in Christ-likeness and to grow their marriages in a way that would honor God and bring about the depth and intimacy that He desires.

REGISTER yourchurch.com/marriage

PURSUING A CROSS-CENTERED MARRIAGE **R**

taught by Brent & Megan Clodgo and Craig & Shannon Lewis

Come and join other couples as together you explore the foundation for a Christ-centered marriage. This five-week class will help you grow your marriage no matter what your life stage or how long you've been married.

WHEN Sundays, 9:45 a.m. // November 10 - December 15

LOCATION B5 (Basement)

BIBLICAL FOUNDATIONS OF MARRIAGE **R**

Come join a panel of College Park couples for a time of discussion focused on building depth and intimacy into your marriage as we seek to live out God's plan and design for marriage.

WHEN 9:45 a.m. // Sunday, November 3

LOCATION Chapel

MARRIAGE ENCOUNTER NIGHT **R**

Come engage with couples who have weathered storms (illness, financial struggle, addiction, communication struggles, parenting struggles, etc.) of various kinds in their marriage and come out seeking the Lord all the more.

WHEN 7 p.m. - 8:45 p.m. // Tuesday, October 2

LOCATION Ministry Center

SINGLES

Many College Park singles are looking for ways to connect and grow alongside other single Christ-followers. We have created a number of opportunities for you to connect with other College Parkers, from service opportunities to Small Groups to Sunday morning big groups.

SINGLES IN SERVICE **R**

Join other College Park singles to paint, clean and serve our community. This is a great way to serve with other singles and get connected to the College Park church family.

WHEN TBD

QUESTIONS? Bob Martin // singles@yourchurch.com

COMPASS *taught by Jim and Barb Standish*

It's always Bible-focused and Christ-centered. Jim has also selected a variety of biblical teachers to study and discuss. This has allowed all the people who attend to learn something new and to develop a greater understanding of scripture.. – Mark Rickman

A group focused on singles in their 30s and 40s who are interested in developing a deeper walk with Christ, while also developing a community of believers within College Park Church.

TIME 11:30 a.m. **ROOM** Chapel B

>>> You can find out about other opportunities, such as our New World class and Active Adults, at yourchurch.com/singles. Also, look for New World and 20somethings info on pages 11-12.

TRAINING FOR GROWTH

We never want to be a church that's a mile wide yet an inch deep. The following opportunities cover a variety of topics in the walk of the Christian life.

**TAKE YOUR GROWTH
TO THE NEXT LEVEL!**



THINK|14

DESIRING GOD

Special Speaker – Dr. John Piper

We have been blessed by God to have Dr. Piper as our THINK|14 speaker. He has been greatly used by God to proclaim the glory of God to thousands over the past few decades. He recently retired from pastoring and is active in writing and speaking.

Dr. Piper is the author of many books and heads the "Desiring God" ministry. We encourage you to register quickly, beginning January 5, 2014, as our limited space will likely fill up. This is an opportunity you don't want to miss.

THINK|14 will also include kidTHINK, our third annual program for kids in grades one through six.

WHEN February 28 - March 2, 2014

REGISTER Beginning January 5, 2014 at yourchurch.com/think14

SPOTLIGHT WEEKEND

SOUL CARE TRAINING

Soul Care Training classes are designed to help you grow in maturity. They will also equip you to help others grow. They will help you become more useful to God in ministering His all-sufficient Word to others, helping them enjoy the great privilege of growing.

GROWING 101: FOUNDATIONS FOR GROWING **R**

OPTION 1

WHEN Sundays, 9:45 a.m. - 11 a.m. // September 8 – October 27

WHERE Chapel C

OPTION 2

WHEN Tuesdays, 7 p.m. - 8:30 p.m. // September 10 – October 29

WHERE E|106

REGISTER yourchurch.com/Growing100

GROWING 201 **R**

MODULE 1 - Conflict Resolution/Identity & Gender

WHEN Tuesdays, 7 p.m. - 8:30 p.m. // September 10 - November 5

WHERE Chapel C

MODULE 2 - Parenting for Life

WHEN Sundays, 9:45 a.m. // November 10, 17, 24; December 8, 22, 29

WHERE Chapel

MODULE 3 - How to Use Scripture in Counseling

WHEN Tuesdays, 7 p.m. - 8:30 p.m. // November 12-December 3

WHERE Chapel A

REGISTER yourchurch.com/Growing200

>>> GROWING 202 - Biblical Decision Making

Registration for 2014 classes will open in late 2013.

COLLEGE PARK INSTITUTE

College Park Institute is the teaching branch of College Park Church that brings training and educational opportunities to everyone in our church.

SIGN UP yourchurch.com/adults

CHURCH HISTORY **R**

This College Park Institute class will help the students to read and interpret the Bible better. We will look at various sections of the Bible and use tools to interpret God's word.

WHEN Tuesdays, 7 - 9 p.m. // September 10 - December 10

LOCATION East Room (S|106 A & B)

TRINITY EXTENSION CAMPUS

College Park Church hosts an extension site for Trinity Evangelical Divinity School (TEDS) in Deerfield, Illinois. Students can earn a Master of Arts in Christian Studies or a Certificate in Biblical Studies. Classes will start this fall and will take place on weekends.

- >>> You can receive a degree from one of the best evangelical seminaries in the country.
- >>> TEDS will provide their own professors, many of whom teach at the Chicago campus.
- >>> You can study while maintaining your job and are not required to move—classes are on Friday evening and Saturday all day—generally four weekends per semester, per class.

WHEN Starts September 6 // Fridays, 6 p.m. - 9 p.m. // Saturdays, 9 a.m. - 5 p.m.

SIGN UP For class listings and detailed information go to yourchurch.com/trinityextension.

QUESTIONS kalexander@yourchurch.com // 317.532.8610

GOING DEEPER

These specialty trainings are offered on occasion for a specific topic or interest group. Consider these opportunities, and commit yourself to growing deeper in the Lord.

PERSONAL EVANGELISM TRAINING **R**

This class will cover overall perspectives on Evangelism, what is the Gospel, telling Your Story, and the art of communication.

WHEN Sundays, 11:30 a.m. // September 8, 15, & 22

LOCATION B5 (Basement)

REGISTER yourchurch.com/events

PRE-MARITAL COUNSELING *taught by Jeff & Pam Bryant* **R**

This class covers basic foundations of Biblical marriage, including communication, finances, and conflict resolution. There is a cost of \$50 per couple for materials.

WHEN Sundays, 8 a.m. // September 8 - October 20

LOCATION East Room

REGISTER yourchurch.com/marriage

JOURNEY IN MISSIONS **R**

Our monthly missions fellowship is led by Nate Irwin, Pastor of Global Outreach, and is a great opportunity to learn about missions and explore your calling to go.

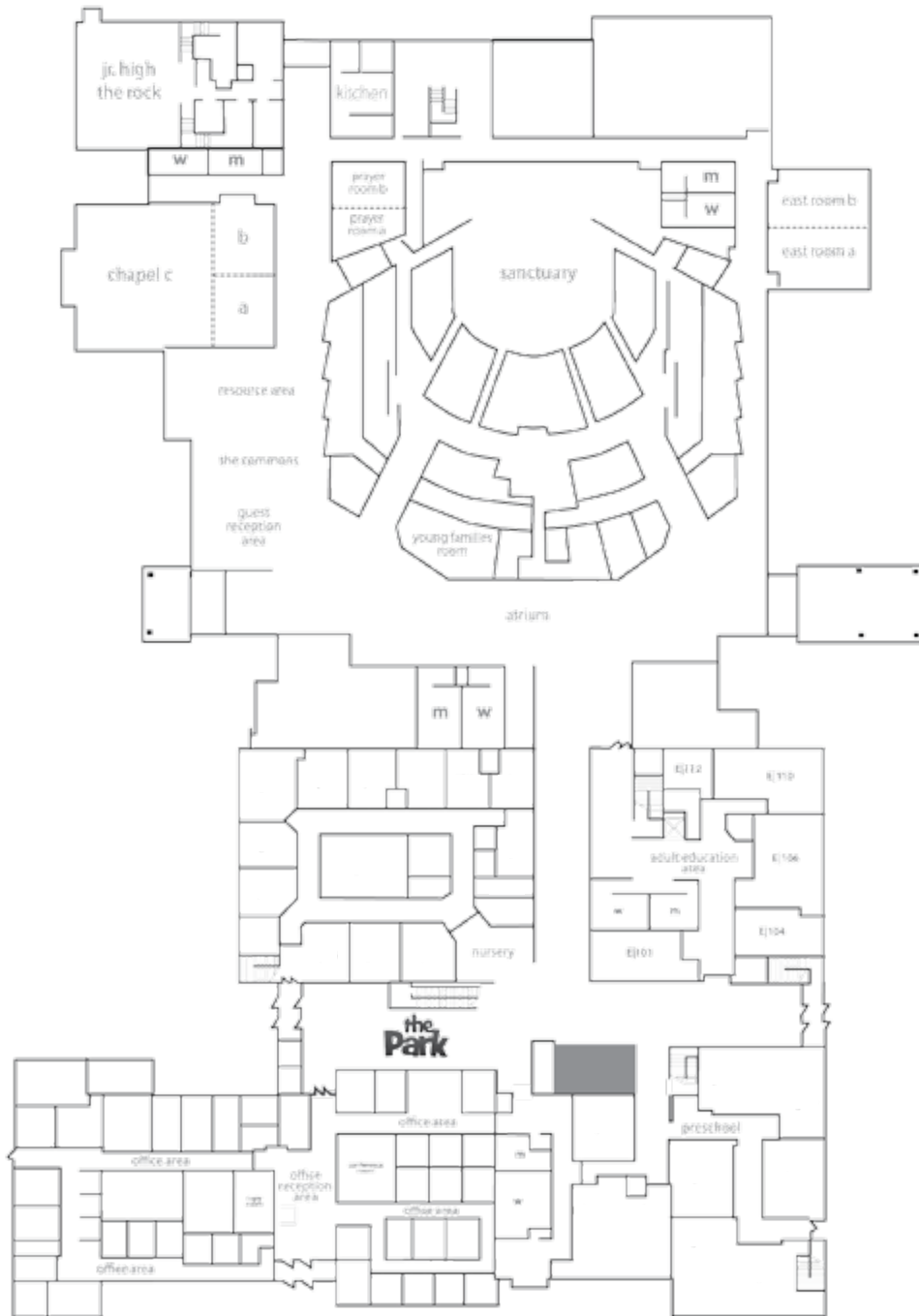
WHEN 6:30 - 8:30 p.m. // 2nd Monday each month, September - May

LOCATION E|106

FINANCIAL PLANNING ASSISTANCE

Do you need help balancing your budget? Are you in deep financial waters, or do you just need some help thinking through your next steps? We have a group of godly financial counselors that can help you map out your finances and chart a new course.

LEARN MORE yourchurch.com/biblicalcounseling



FINDING YOUR WAY AROUND COLLEGE PARK CHURCH



basement



second floor



**2606 West 96th Street
Indianapolis, IN 46268**

Office Hours: Mon - Fri : 8:30 a.m. - 5:00 p.m.

P: 317.875.0282 | F: 317.875.0605

office@yourchurch.com

yourchurch.com